

# Rehrig Pacific Reusable Sharps and Reusable Regulated Medical Waste Containers



# Index

## Reusable Medical Waste Containers

10 Gallon Medical Waste Container .....	1
17 Gallon Medical Waste Container.....	2
31 Gallon Medical Waste Container.....	3
43 Gallon Medical Waste Container .....	4
31 and 43 Gallon Lab Lid .....	5
31 and 43 Gallon Dolly .....	6
31 Gallon Foot Pedal .....	7
95 Gallon Medical Waste ROC.....	8

## Reusable Sharps Containers

10 Gallon Reusable Sharps Container.....	9
17 Gallon Reusable Sharps Container.....	10
Tortuous Path Insert.....	11
10 Gallon Foot Pedal Dolly.....	12
17 Gallon Foot Pedal Dolly.....	13
Wire Dolly for 10 and 17 Gallon Containers.....	14
Model SS Reusable Sharps Container .....	15
Model TS Reusable Sharps Container.....	16
Vertical Drop Insert .....	17
Horizontal Insert.....	18
Wall Mount.....	19
Front Lock Option.....	20
Single Arm Wall Mount.....	21
Counter Mount.....	22
Sharps In-Service Storage Rack .....	23
Sharps Transport.....	24

# 10 Gallon Medical Waste Container

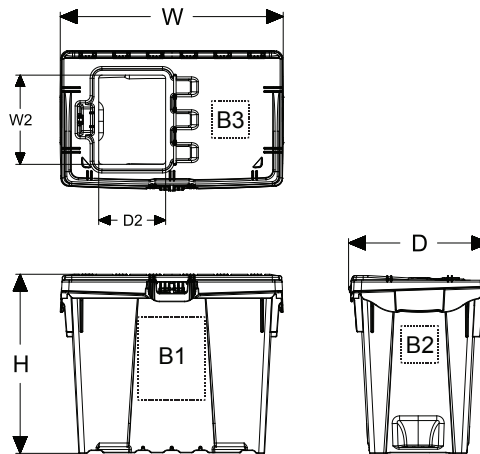


## Features & Benefits

- DOT Approved - PGII Rated Container
- HDPE and clarified PP Material
- Attached lidded container
- Nestable and Stackable for maximizing transport and storage efficiencies
- Securely stacks for transport with the 17, 31 and 43 gallon Medical Waste Containers
- Integrated Bag holders in corners to secure the bags in place during use
- Attached main lid provides full access to the waste disposal area
- Attached sub-lid provides limited access to the waste disposal area
- Semi-transparent locking sub-lid for monitoring waste safely to fill line
- Smooth interiors for ease of cleaning
- Reinforced handles for safe carrying
- Textured exterior areas for easy of cleaning
- Securely locks for transport
- For added security, tie location is integrated into the main lid and body
- Hot Stamping available for branding
- Unique bar code for management and cycle tracking available
- Accessories Available: Foot pedal operated, wheeled dolly and tortuous path insert
- Decanting and wash systems available
- Optional multi-color transfer, bar code, and RFID tracking labels available
- Available in a range of standard colors to represent multiple waste streams
- Recommended Bag Size: 20" x 13" x 39"
- Authorized Gross Mass: 13.3 kg

Specifications	IN/LB	CM/KG
Width (W)	20.0	50.8
Depth (D)	12.5	31.8
Height (H)	16.0	40.6
Width of Sub-Opening (W2)	8.0	20.3
Depth of Sub-Opening (D2)	6.0	15.2
Capacity	10 Gal	
Nesting Increment	4.50	11.43
Stacking Increment	15.65	39.75
Part Weight	7.2	3.3

Branding	WIDTH (IN)	HEIGHT (IN)
Front Brand (B1)	6.0	7.5
Side Brand (B2)	3.34	3.34
Lid Brand (B3)	3.34	3.34



# 17 Gallon Medical Waste Container

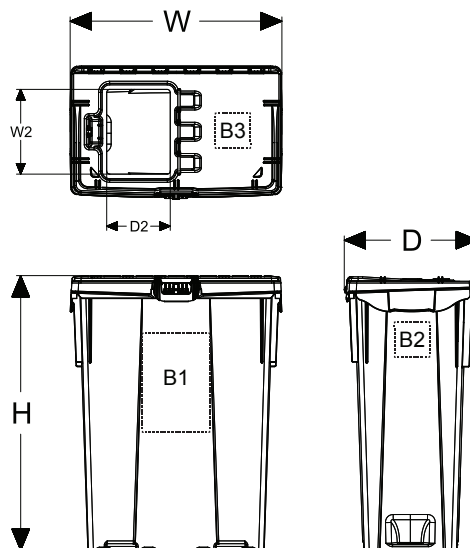


## Features & Benefits

- DOT Approved - PGII Rated Container
- HDPE and clarified PP Material
- Attached lidded container
- Nestable and Stackable for maximizing transport and storage efficiencies
- Securely stacks for transport with the 31 and 43 gallon Medical Waste Containers
- Integrated Bag holders in corners to secure the bags in place during use
- Attached main lid provides full access to the waste disposal area
- Attached sub-lid provides limited access to the waste disposal area
- Semi-transparent locking sub-lid for monitoring waste safely to fill line
- Smooth interiors for ease of cleaning
- Reinforced handles for safe carrying
- Textured exterior areas for easy of cleaning
- Securely locks for transport
- For added security, tie location is integrated into the main lid and body
- Hot Stamping available for branding
- Unique bar code for management and cycle tracking available
- Accessories Available: Foot pedal operated, wheeled dolly and tortuous path insert
- Decanting and wash systems available
- Optional multi-color transfer, bar code, and RFID tracking labels available
- Available in a range of standard colors to represent multiple waste streams
- Recommended Bag Size: 20" x 13" x 39"
- Authorized Gross Mass: 22.6 kg

Specifications	IN/LB	CM/KG
Width (W)	20	50.8
Depth (D)	12.5	31.8
Height (H)	25.9	65.8
Width of Sub-Opening (W2)	8.0	20.3
Depth of Sub-Opening (D2)	6.0	15.2
Capacity	17 Gal	
Nesting Increment	7.5	19.1
Stacking Increment	25.4	64.5
Weight	9.55	4.33

Branding	WIDTH (IN)	HEIGHT (IN)
Front Brand (B1)	6.375	9.375
Side Brand (B2)	3.34	3.34
Lid Brand (B3)	3.34	3.34



A FAMILY TRADITION OF GROWTH, SERVICE AND INNOVATION

# 31 Gallon Medical Waste Container

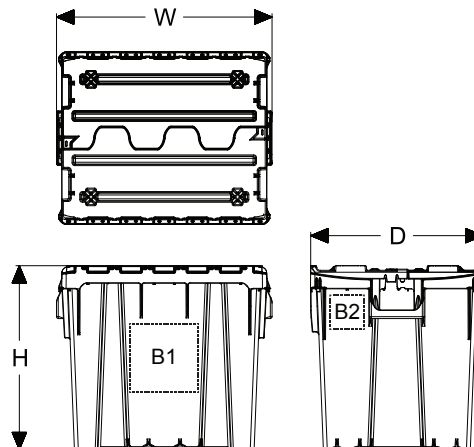


## Features & Benefits

- DOT Approved – PGII Rated Container
- HDPE material – all plastic construction
- Reinforced handles won't flex under rated loads
- During use, bag holders secure the bags in open position when lids are closed
- Smooth interior for easy cleaning
- Textured exterior areas for easy removal of adhesive labels
- Durable base with drag rails
- Hot Stamping available for branding
- Optional multi-color transfer, bar code, and RFID tracking labels available
- Available in a range of standard colors to represent multiple waste streams
- Nestable and Stackable for maximizing transport and storage efficiencies
- Securely stacks for transport with the 31, 43, and 95 gallon Medical Waste Containers
- Split lid securely locks for storage and transport
- Includes tie area for added security during transport
- Optional lab-lid, dolly and foot pedal dolly available
- Recommended Bag Size: 45" x 49"
- Authorized Gross Mass: 22.6 kg

Specifications	IN/LB	CM/KG
Width (W)	20	50.8
Depth (D)	25	63.5
Height (H)	21.3	54.1
Capacity	31 Gal	
Stack Quantity & Height	5 (105.3")	
53' Truckload Quantity	625	

Branding	WIDTH (IN)	HEIGHT (IN)
Front Brand (B1)	8	8
Side Brand (B2)	4	4



A FAMILY TRADITION OF GROWTH, SERVICE AND INNOVATION

# 43 Gallon Medical Waste Container

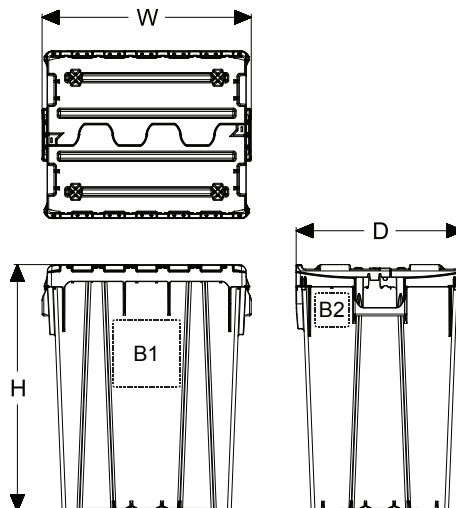


### Features & Benefits

- DOT Approved – PGII Rated Container
- HDPE material – all plastic construction
- Reinforced handles won't flex under rated loads
- During use, bag holders secure the bags in open position when lids are closed
- Smooth interior for easy cleaning
- Textured exterior areas for easy removal of adhesive labels
- Durable base with drag rails
- Hot Stamping available for branding
- Optional multi-color transfer, bar code, and RFID tracking labels available
- Available in a range of standard colors to represent multiple waste streams
- Nestable and Stackable for maximizing transport and storage efficiencies
- Securely stacks for transport with the 31, 43, and 95 gallon Medical Waste Containers
- Split lid securely locks for storage and transport
- Includes tie area for added security during transport
- Optional lab-lid, dolly and foot pedal dolly available
- Recommended Bag Size: 45" x 49"
- Authorized Gross Mass: 30.7 kg

Specifications	IN/LB	CM/KG
Width (W)	20	50.8
Depth (D)	25	63.5
Height (H)	29.5	74.9
Capacity	43 Gal	
Stack Quantity & Height	3 (87.8")	
53' Truckload Quantity	375	

Branding	WIDTH (IN)	HEIGHT (IN)
Front Brand (B1)	8	8
Side Brand (B2)	4	4



A FAMILY TRADITION OF GROWTH, SERVICE AND INNOVATION

# 31 and 43 Gallon Lab Lid

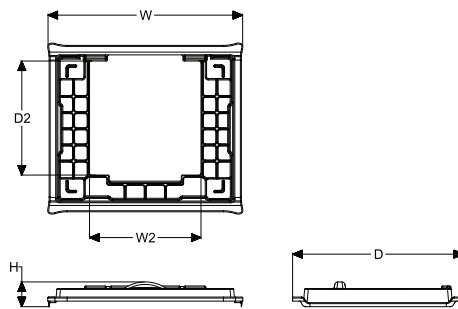


## Features & Benefits

- Compatible with the 31 and 43 Gallon containers
- Hinged lid allows for a one hand operation
- Sub Lid provides limited access to the all the waste in the container
- Securely locks over the container and remains in place
- Works with the 31 gallon foot pedal dolly
- Securely holds the red bag in place when secured to the container



Specifications	IN/LB	CM/KG
Width (W)	24.1	61.0
Depth (D)	21.2	53.9
Height (H)	3.1	7.9
Width of Opening (W2)	13.8	35.1
Depth of Opening (D2)	14.1	35.9



# 31 and 43 Gallon Dolly

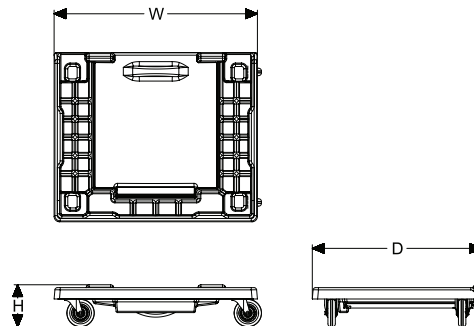


### Features & Benefits

- Compatible with the 31 and 43 Gallon containers
- Containers securely rest on the dolly
- Provides easy mobility in areas where the containers move about frequently
- Wheeled base with non-marking casters



Specifications	IN/LB	CM/KG
Width (W)	22.4	56.9
Depth (D)	18.6	47.2
Height (H)	4.6	11.7



# 31 Gallon Foot Pedal Dolly

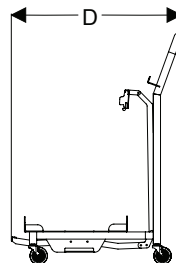
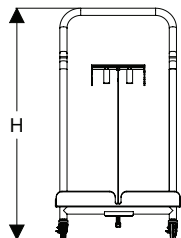
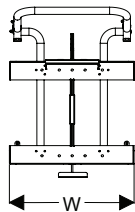


## Features & Benefits

- Compatible with the 31g container and existing lab lid
- Lab lid can easily be removed for cleaning
- Easy Installation
- Durable Construction
- Foot Pedal Operated lid provides hands-free operation
- Swivel, locking and non-marking wheels
- Integrated handle for ease of maneuvering
- Stackable for storage and transportation



Specifications	IN/LB	CM/KG
Width (W)	21.64	55
Depth (D)	30	76.2
Height (H)	40	101.6



A FAMILY TRADITION OF GROWTH, SERVICE AND INNOVATION

# 95 Gallon Medical Waste ROC

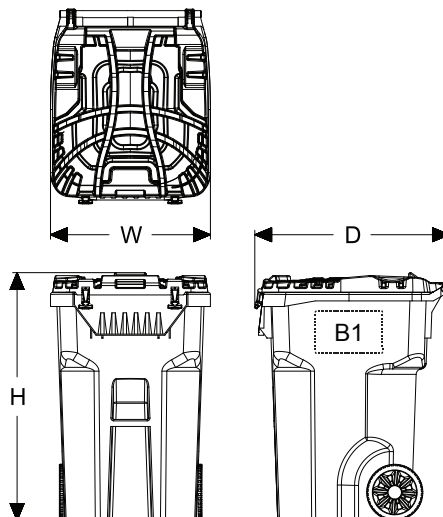


### Features & Benefits

- DOT Approved - PG II rated Container
- Corrugated lid adds strength and includes locking latches
- Corrugations in the lid prevents any pooling water or rain
- Lid is designed for stacking 95s, as well as, 31 and 43 gallon containers
- Smooth interior with no catch points
- Virgin and recycled HDPE resins with UV stabilizers
- Heavy duty 3/4" axel
- Durable 10" or 12" rubber wheels
- Authorized Gross Mass: 171 kg
- Branding area (B1) on both sides of container

Specifications	IN/LB	CM/KG
Width (W)	28.5	72.4
Depth (D)	33.8	85.9
Height (H)	44.2	112.3
Load Rating	332.5	150.8
Capacity	95 Gal	

Branding	WIDTH (IN)	HEIGHT (IN)
Side Brand (B1)	12	7.5



A FAMILY TRADITION OF GROWTH, SERVICE AND INNOVATION

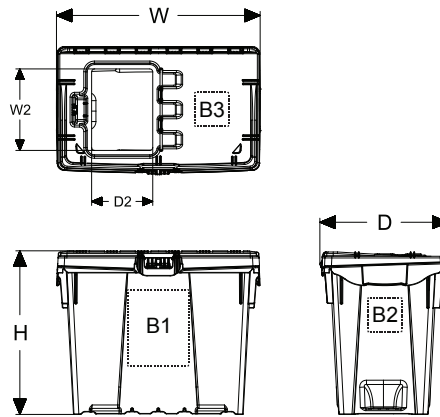
# 10 Gallon Reusable Sharps Container



## Features & Benefits

- Puncture and leak resistant
- HDPE and clarified PP material
- Attached lidded container
- Nestable and stackable for maximizing transport and storage efficiencies
- Semi-transparent locking sub-lid for monitoring waste safely to fill line
- Multiple lid openings for restricted or unrestricted access during use
- Smooth interiors for ease of cleaning
- Reinforced handles for safe carrying
- Accessories Available: Foot pedal operated, wheeled dolly, and tortuous path insert
- Unique bar code for management and cycle tracking
- Securely locks for transporting in racks
- For added security, tie location is integrated into the main lid and body
- Includes an in-mold label that contains all FDA recommended warnings and instructions
- FDA 510(k) cleared for 300 cycles
- FDA 510(k) cleared as a Class II Medical Device
- OSHA compliant
- Meets or exceeds US and international standards for Sharps containers
- Decanting and wash systems available

Specifications	IN/LB	CM/KG
Width (W)	20.0	50.8
Depth (D)	12.5	31.8
Height (H)	16.0	40.6
Width of Sub-Opening (W2)	8.0	20.3
Depth of Sub-Opening (D2)	6.0	15.2
Maximum Capacity	10 Gal	
Fill Capacity	7.5 Gal	
Nesting Increment	4.50	11.43
Stacking Increment	15.65	39.75
Part Weight	7.2	3.3



Branding	WIDTH (IN)	HEIGHT (IN)
Front Brand (B1)	Required Sharps Label	
Side Brand (B2)	3.34	3.34
Lid Brand (B3)	3.34	3.34



A FAMILY TRADITION OF GROWTH, SERVICE AND INNOVATION

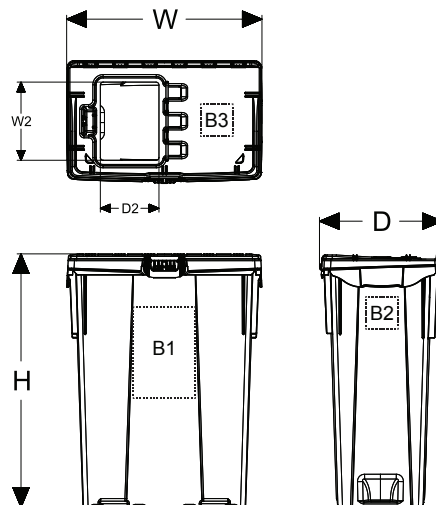
# 17 Gallon Reusable Sharps Container



## Features & Benefits

- Puncture and leak resistant
- HDPE and clarified PP material
- Attached lidded container
- Nestable and stackable for maximizing transport and storage efficiencies
- Semi-transparent locking sub-lid for monitoring waste safely to fill line
- Multiple lid openings for restricted or unrestricted access during use
- Smooth interiors for ease of cleaning
- Reinforced handles for safe carrying
- Accessories Available: Foot pedal operated, wheeled dolly, and tortuous path insert
- Unique bar code for management and cycle tracking
- Securely locks for transporting in racks
- For added security, tie location is integrated into the main lid and body
- Includes an in-mold label that contains all FDA recommended warnings and instructions
- FDA 510(k) cleared for 300 cycles
- FDA 510(k) cleared as a Class II Medical Device
- OSHA compliant
- Meets or exceeds US and international standards for Sharps containers
- Decanting and wash systems available

Specifications	IN/LB	CM/KG
Width (W)	20	50.8
Depth (D)	12.5	31.8
Height (H)	25.9	65.8
Width of Sub-Opening (W2)	8.0	20.3
Depth of Sub-Opening (D2)	6.0	15.2
Maximum Capacity	17 Gal	
Fill Capacity	12.75 Gal	
Nesting Increment	7.5	19.1
Stacking Increment	25.4	64.5
Weight	9.55	4.33

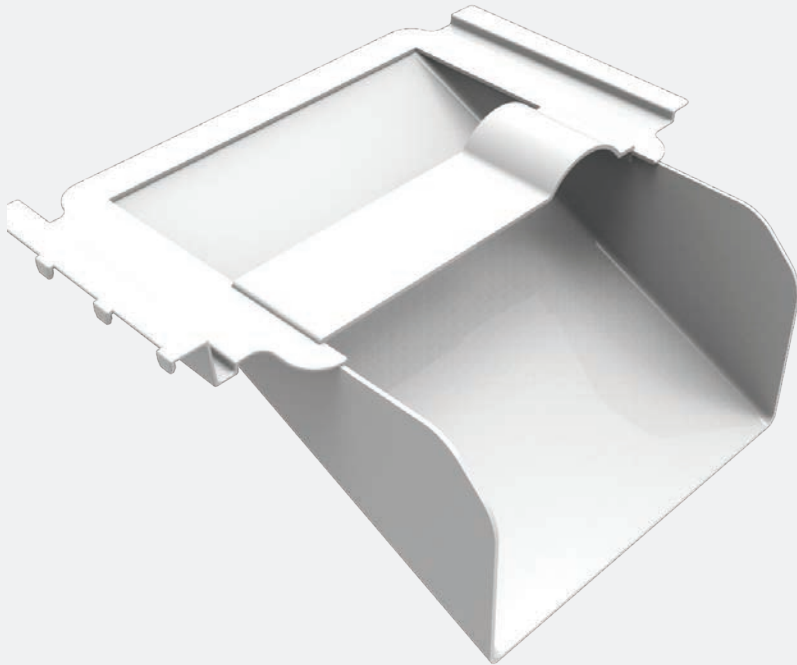


Branding	WIDTH (IN)	HEIGHT (IN)
Front Brand (B1)	Required Sharps Label	
Side Brand (B2)	3.34	3.34
Lid Brand (B3)	3.34	3.34



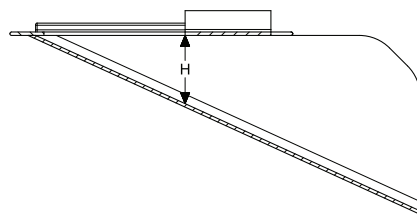
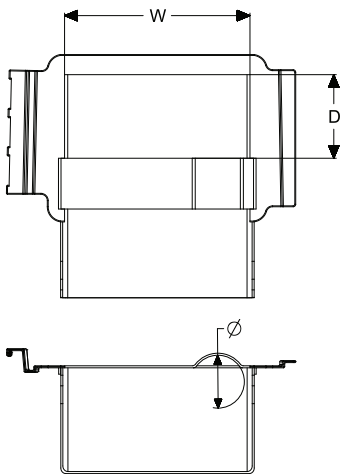
A FAMILY TRADITION OF GROWTH, SERVICE AND INNOVATION

# Tortuous Path Insert

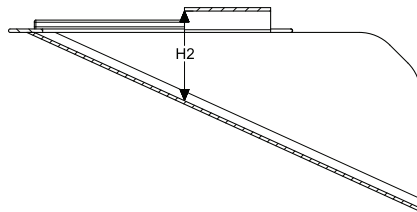


## Features & Benefits

- Compatible with the 10 and 17 Gallon containers
- The opening restricts direct access to waste, while allowing larger items to pass through in high volume areas
- One piece rigid construction
- Easily cleaned or wiped down
- Insert is located in the area under the main lid and is accessible for use in the sub-lid area
- Fingers on the side help with placement and prevent movement
- Arc opening allows for larger cylindrical items to be disposed of
- Tampering with the insert is prevented when the main lid and the body are secured using a tie
- Container can transport with the insert in place and the sub-lid closed



Flat Opening Section View  
[Figure 1]



Arc Opening Section View  
[Figure 2]

Specifications	IN/LB	CM/KG
Opening Width (W)	7.3	18.5
Opening Depth (D)	3.3	8.4
Flat Opening Height (H)	1.5	3.8
Arc Opening Height (H2)	2.0	5.1
Arc Opening Diameter (Ø)	2.1	5.3



# 10 Gallon Foot Pedal Dolly

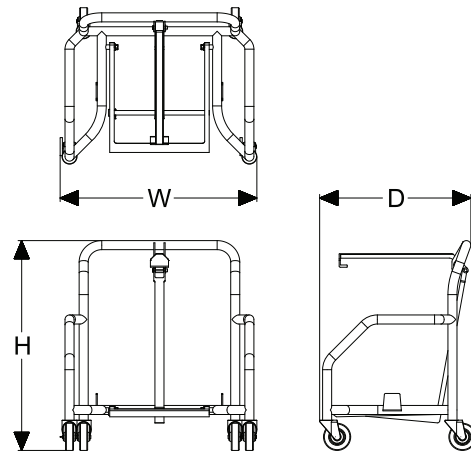


## Features & Benefits

- Compatible with the 10 Gallon Container
- Non-marking wheels
- Easily stack for transporting
- Can easily be secured and removed from dolly
- Hands-free operation of the large lid
- Integrated handle in rear of dolly for easily maneuvering around
- Wheels contain brakes



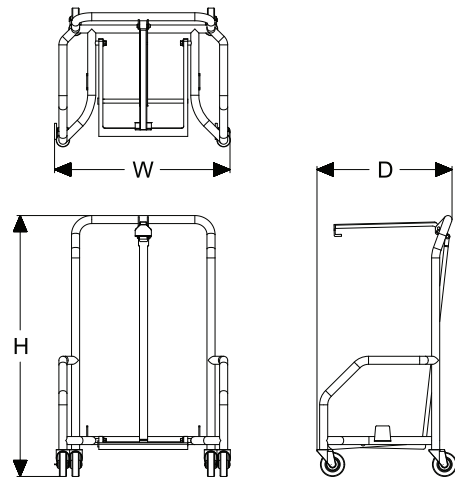
Specifications	IN/LB	CM/KG
Width (W)	20.4	51.8
Depth (D)	15.4	39.1
Height (H)	22.9	58.0



# 17 Gallon Foot Pedal Dolly



Specifications	IN/LB	CM/KG
Width (W)	20.9	53.0
Depth (D)	17.3	43.8
Height (H)	32.5	82.5



## Features & Benefits

- Compatible with the 17 Gallon container
- Non-marking wheels
- Easily stack for transporting
- Can easily be secured and removed from dolly
- Hands-free operation of the large lid
- Integrated handle in the rear of dolly for easily maneuvering around
- Wheels contain breaks



# Wire Dolly for 10 and 17 Gallon Containers

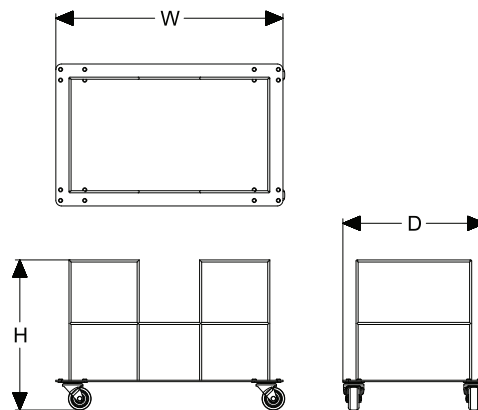


### Features & Benefits

- Durable metal coated construction
- Compatible with the 10 and 17 Gallon containers
- Easily mobilizes containers in a healthcare environment that's constantly changing or is unpredictable where waste generation is occurring
- Non-locking casters, easily swivels and moves about quickly



Specifications	IN/LB	CM/KG
Width (W)	20.0	50.8
Depth (D)	12.5	31.8
Height (H)	13.2	33.5



# Model SS Reusable Sharps Container

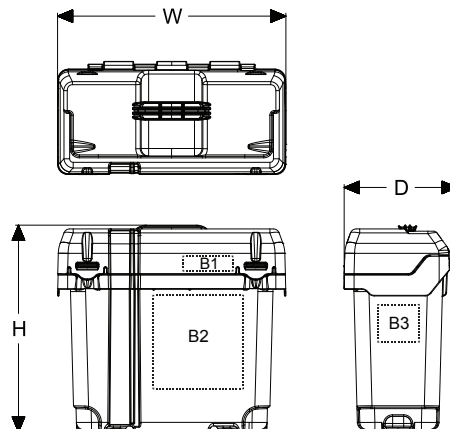


## Features & Benefits

- FDA 510(k) cleared for 600 cycles
- Puncture resistant and leak proof
- Polycarbonate construction with semi-transparent body for viewing fill levels
- Stackable and cross stackable for storage when full
- Minimal moving parts for ease of use
- Attached lidded container
- Locking lid with integrated handle for ease of carrying
- Universal Horizontal and Vertical Drop Inserts
- Includes an in-mold label that contains all FDA recommended warnings and instructions
- Secure key-lock wall mount or counter mount available
- Securely locks for safe transport in rack
- Unique bar code for management and cycle tracking
- OSHA Compliant
- Meets or exceeds US and international standards for Sharps containers
- Decanting and wash systems available

Specifications	IN/LB	CM/KG
Width (W)	15.1	38.4
Depth (D)	7.5	19.1
Height (H)	13.8	34.9
Maximum Capacity	3.2 Gal	
Fill Capacity	2.4 Gal	
Weight	3.4	1.6

Branding	WIDTH (IN)	HEIGHT (IN)
Lid Brand (B1)	3.32	1
Front Brand (B2)	Required Sharps Label	
Side Brand (B3)	2.75	2.5



A FAMILY TRADITION OF GROWTH, SERVICE AND INNOVATION

# Model TS Reusable Sharps Container

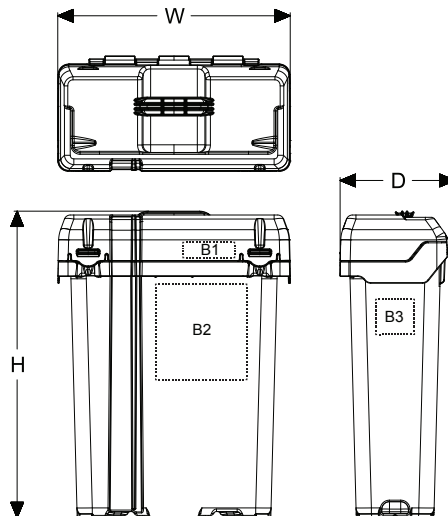


## Features & Benefits

- FDA 510(k) cleared for 600 cycles
- Puncture resistant and leak proof
- Polycarbonate construction with semi-transparent body for viewing fill levels
- Stackable and cross stackable for storage when full
- Minimal moving parts for ease of use
- Attached lidded container
- Locking lid with integrated handle for ease of carrying
- Universal Horizontal and Vertical Drop Inserts
- Includes an in-mold label that contains all FDA recommended warnings and instructions
- Secure key-lock wall mount or counter mount available
- Securely locks for safe transport in rack
- Unique bar code for management and cycle tracking
- OSHA Compliant
- Meets or exceeds US and international standards for Sharps containers
- Decanting and wash systems available

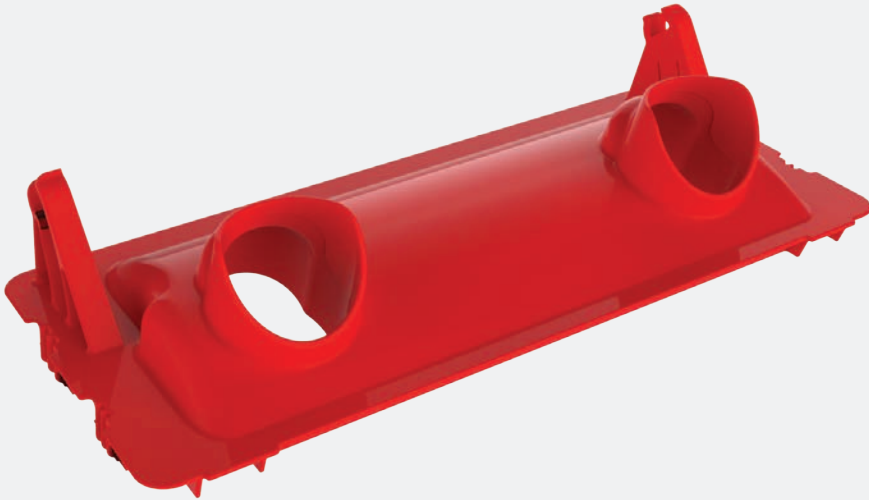
Specifications	IN/LB	CM/KG
Width (W)	15.1	38.4
Depth (D)	7.5	19.1
Height (H)	20.0	50.8
Maximum Capacity	4.9 Gal	
Fill Capacity	3.675 Gal	
Weight	4.57	2.07

Branding Areas	WIDTH (IN)	HEIGHT (IN)
Lid Brand (B1)	3.32	1
Front Brand (B2)	Required Sharps Label	
Side Brand (B3)	2.75	2.5



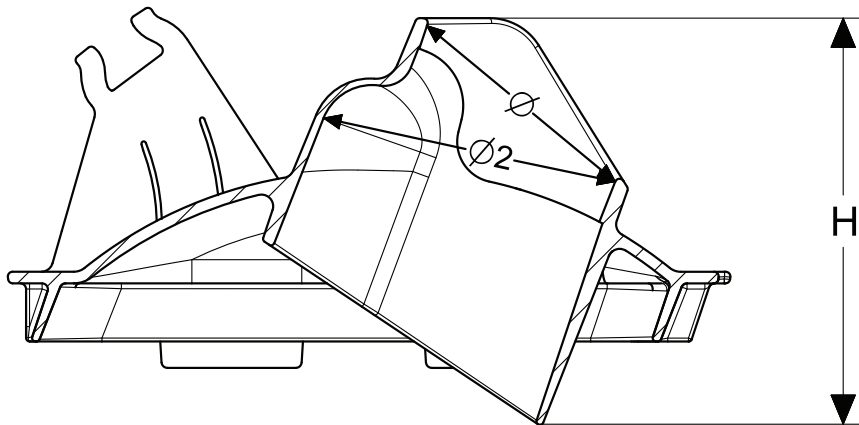
A FAMILY TRADITION OF GROWTH, SERVICE AND INNOVATION

# Vertical Drop Insert



## Features & Benefits

- Polycarbonate material
- Compatible with Models SS and TS sized reusable sharps containers
- Restrictive opening limits the reaching into the container and accessing waste
- Two openings for effectively distributing waste in the container

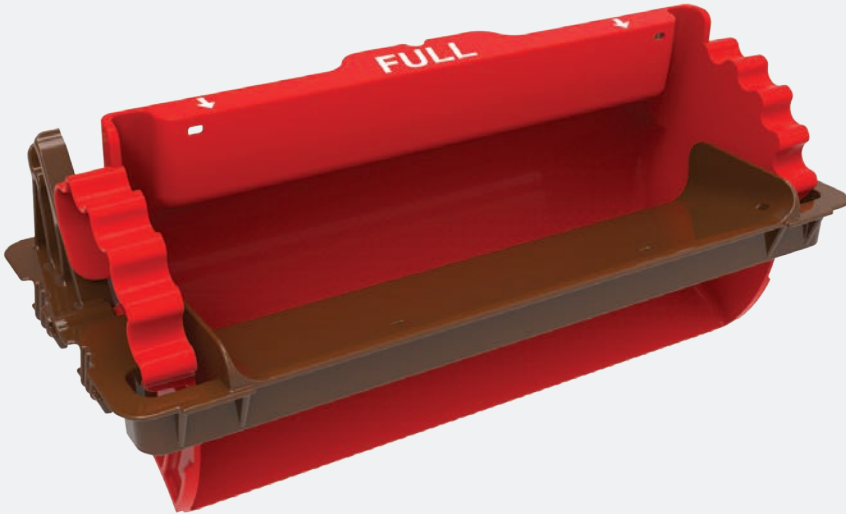


Vertical Drop Opening  
Section View

Specifications	IN/LB	CM/KG
Upper Opening Diameter (Ø)	2.1	5.3
Inner Opening Diameter (Ø2)	2.56	6.5
Slot Height (H)	3.5	8.9

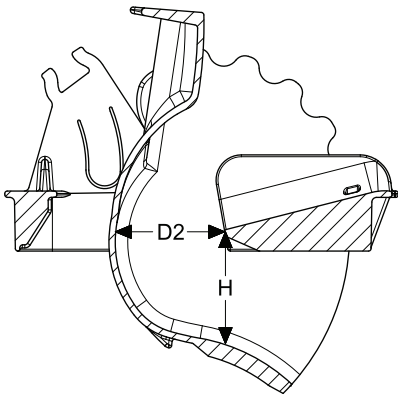


# Horizontal Insert

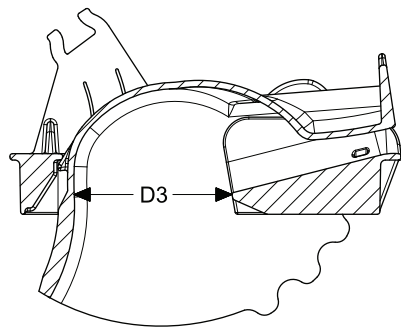


## Features & Benefits

- Polycarbonate material
- Compatible with Models SS and TS sized reusable sharps containers
- Smooth slope allows waste items to easily glide into container using gravity
- Restricted opening yet large enough to accept multiple waste streams
- For large items not typical in size, the flusher rotates forward and enlarges the disposal area
- When the container has reached the fill line, the flusher can lock down preventing further filling



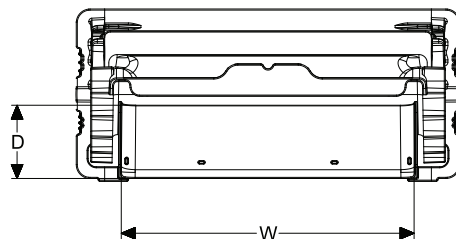
**Open Position**  
[Figure 1]



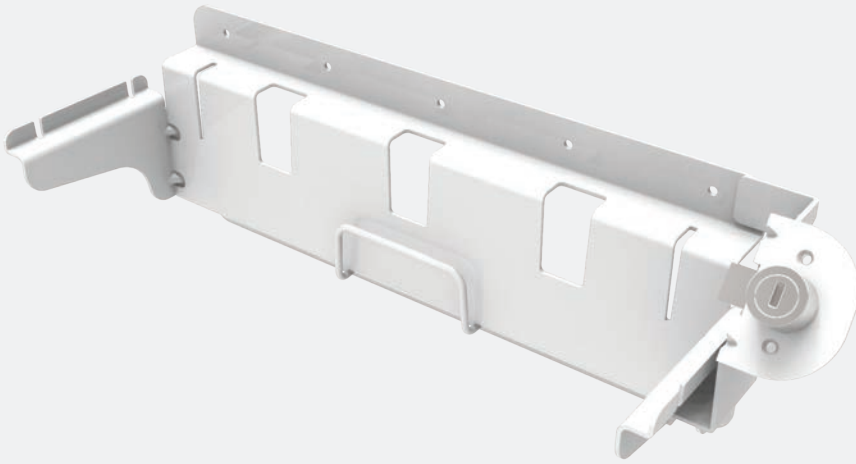
**Flush Position**  
[Figure 2]



Specifications	IN/LB	CM/KG
Slope Width (W)	10.6	26.9
Slope Depth (D)	2.7	6.9
<b>Open Position [Figure 1]</b>		
Slope to Flusher Depth (D2)	1.7	4.4
Slope to Flusher Height (H)	1.7	4.4
<b>Flush Position [Figure 2]</b>		
Slope to Flusher Depth (D3)	2.5	6.3

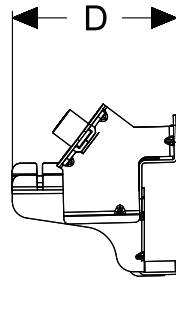
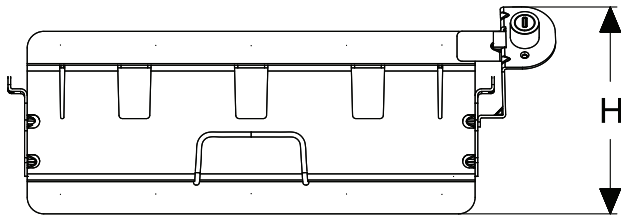
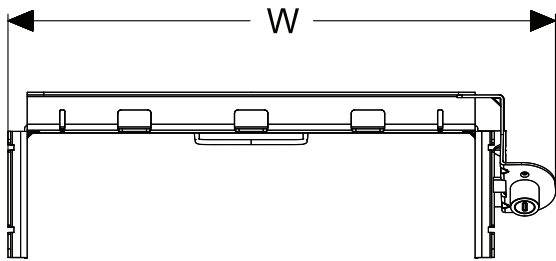


# Wall Mount



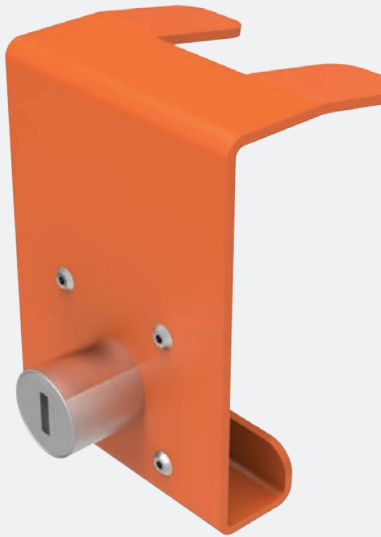
### Features & Benefits

- Durable metal coated construction
- Low profile and secure
- Compatible with Models SS and TS
- Securely mounts the container to the wall during use
- Contains multiple mounting locations pre-drilled to meet your needs during installation
- Includes a key lock for added security
- Available in a left or right lock orientation

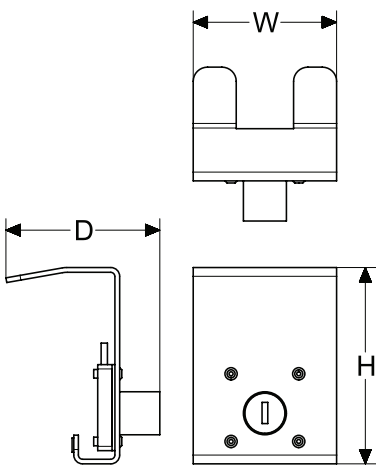


Specifications	IN/LB	CM/KG
Width (W)	16.5	41.9
Depth (D)	5.0	12.7
Height (H)	6.2	15.9
Weight	3.1	1.3

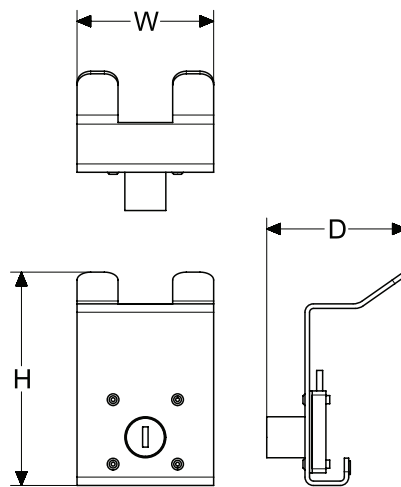
# Front Lock Options



**HORIZONTAL INSERT COMPATIBLE**



**VERTICAL DROP INSERT COMPATIBLE**



HORIZONTAL INSERT COMPATIBLE		
Specifications	IN/LB	CM/KG
Width (W)	2.5	6.35
Depth (D)	2.7	6.85
Height (H)	3.4	8.6
Weight	0.5	0.23

VERTICAL DROP INSERT COMPATIBLE		
Specifications	IN/LB	CM/KG
Width (W)	2.5	6.35
Depth (D)	2.55	6.5
Height (H)	3.9	9.9
Weight	0.5	0.23

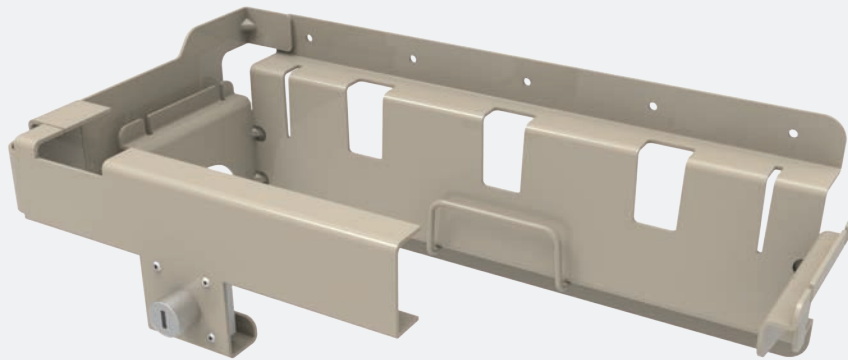
## Features & Benefits

- Durable metal coated construction
- Added security option in conjunction with Wall Mount for high risk areas
- Compatible with Models SS and TS
- Available in two options each specific to the horizontal insert or the vertical drop insert
- Includes a key lock for added security



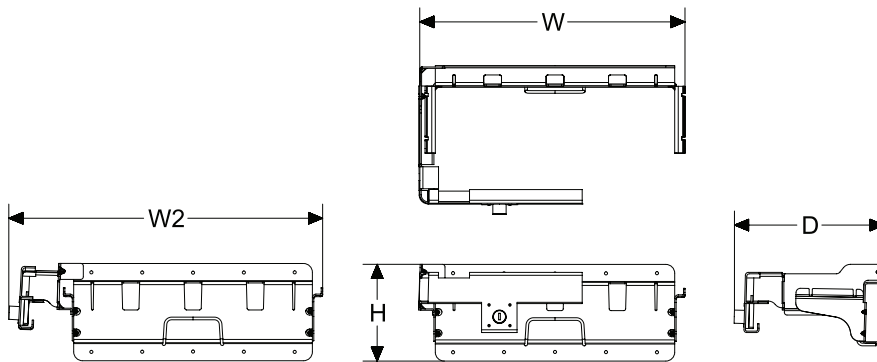
A FAMILY TRADITION OF GROWTH, SERVICE AND INNOVATION

# Single Arm Wall Mount



### Features & Benefits

- Locking arm swings to open and close for easy container hanging and removing
- Durable metal coated construction
- Low profile and secure
- Compatible with Models SS and TS, the vertical drop insert, and the horizontal drop insert
- Securely mounts the container to the wall during use
- Contains multiple mounting locations pre-drilled to meet your needs during installation
- Includes a key lock for added security

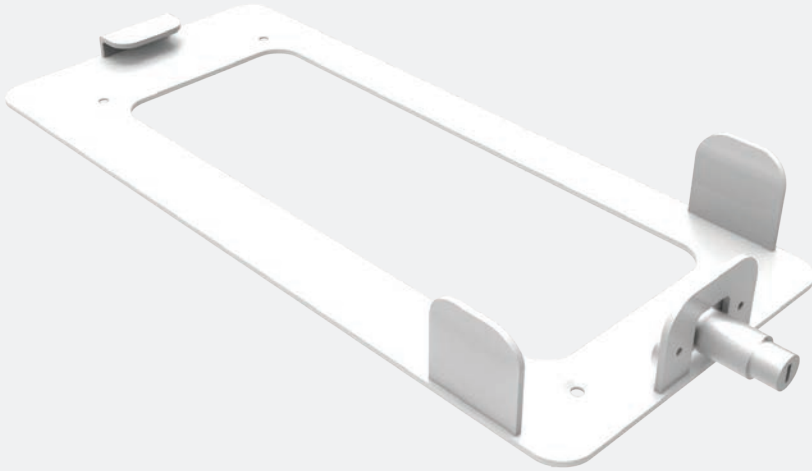


Specifications	IN/LB	CM/KG
Width (W)	15.0	38.1
Open Arm Width (W2)	17.75	45.1
Depth (D)	8.5	21.6
Height (H)	5.5	14.0
Weight	3.9	1.77



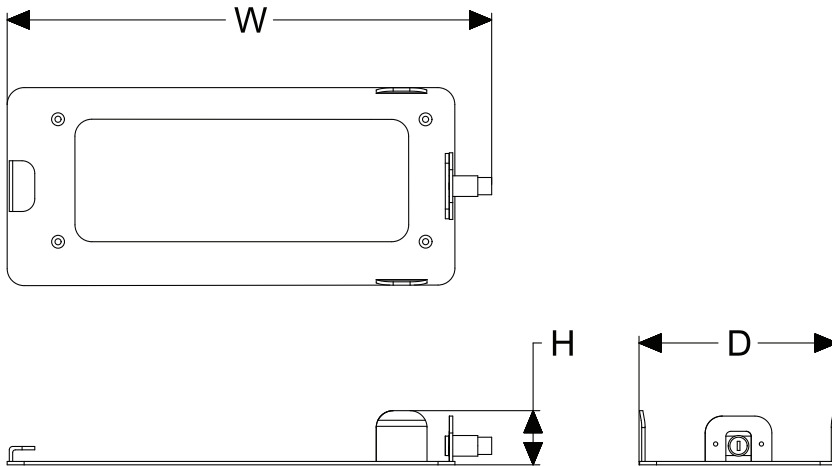
A FAMILY TRADITION OF GROWTH, SERVICE AND INNOVATION

# Counter Mount



### Features & Benefits

- Compatible with the SS sized Reusable Sharps Container
- Durable construction with a low profile design
- For areas with no wall space, the counter top mount can easily be secured to a counter to safely hold a SS sized container upright
- Lock and key to secure container to counter



Specifications	IN/LB	CM/KG
Width (W)	14.3	36.3
Depth (D)	5.9	15.0
Height (H)	1.6	4.1



A FAMILY TRADITION OF GROWTH, SERVICE AND INNOVATION

# Sharps In-Service Storage Rack

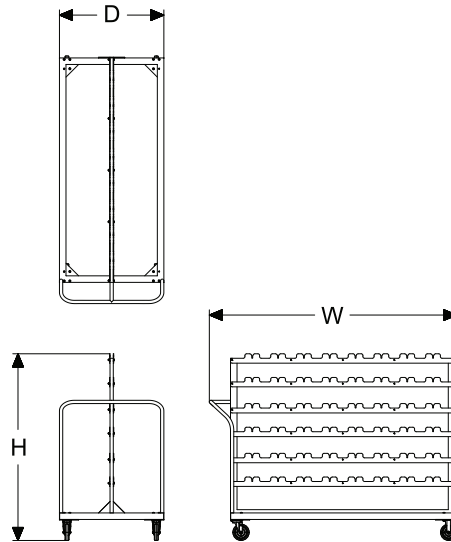


## Features & Benefits

- Designed for distributing and moving SS and TS reusable sharps containers about in a hospital
- Light weight yet durable for container collection and maneuverability
- Rack easily and securely supports each container on its short end
- SS and TS sized sharps containers can be intermixed in the unit
- Fits easily through doorways
- Non-marking casters

Specifications	IN/LB	CM/KG
Width (W)	75.4	191.5
Depth (D)	32	81.3
Height (H)	57.2	26.0

Rack Load Data	SS	TS
Quantity per Row	8	8
Maximum Rows per Rack	6	4
Containers per Rack	48	32



A FAMILY TRADITION OF GROWTH, SERVICE AND INNOVATION

# Sharps Transport Rack

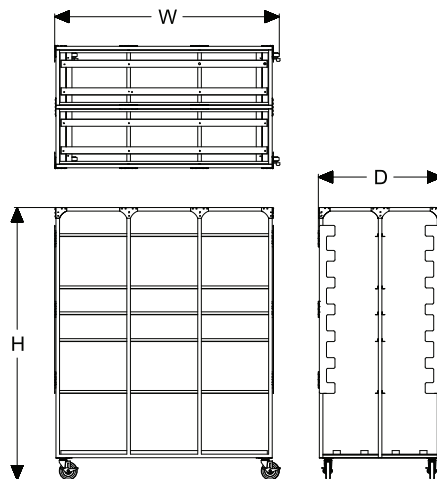


## Features & Benefits

- Stainless steel construction
- Easily cleaned and wiped down
- Locking doors for transport to insure containers remain secure and upright during transport.
- Easily accessible for container placement or removal from both ends of the rack
- With locking and swivel casters for easier maneuverability
- Designed for the transporting sharps containers from the Generator to the Processor by road.
- Compatible with Models SS and TS containers and the 10 and 17 gallon containers
- Track in bottom allows for 10 and 17g containers to rest securely while additional 10 and 17g stack on top for transport.
- Covers are available through an outside supplier

Specifications	IN/LB	CM/KG
Width (W)	61.0	154.9
Depth (D)	34.5	87.6
Height (H)	70	177.8
53' Truckload Quantity	28	

Rack Load Data	SS	TS	10 Gal	17 Gal
Quantity per Row	8	8	3	3
Maximum Rows per Rack	8	6	8	4
Containers per Rack	64	48	24	12



A FAMILY TRADITION OF GROWTH, SERVICE AND INNOVATION



A FAMILY TRADITION OF GROWTH, SERVICE AND INNOVATION

**Corporate Headquarters**

4010 East 26th St., Los Angeles, CA 90058  
(800) 421-6244 • (323) 262-5145

**Locations**

Los Angeles, CA • Orlando, FL • Atlanta, GA • De Soto, KS  
Erie, PA • Dallas, TX • Kenosha, WI • Quebec, Canada  
Querétaro, Qro., Mexico

**Web:** [www.rehrigpacific.com](http://www.rehrigpacific.com)

Updated 8.9.16